



Capital Humane Society

SHELTER SHARING

Fall 2017

Mission: To fulfill the promise of animals, Capital Humane Society shelters animals, protects animals and teaches compassion and respect.

Capital Humane Society
Admissions & Assessment
Center
2320 Park Boulevard
Lincoln, NE 68502

Capital Humane Society
Pieloch Pet Adoption Center
6500 S. 70th Street
Lincoln, NE 68516

402.441.4488
www.capitalhumanesociety.org

Articles

Kane's Comeback

Fall is Flea Season

Learning the Basics

Volunteer Spotlight

Staff Profile

Upcoming Events!

Basic Obedience Classes
- Call for dates & times

Fall Phonathon
- Starts September 5th

Tails 'N Ties Annual Dinner
- October 20th

Kane's Comeback

By Matt Madcharo, Director of Operations & Co-Director of Fundraising

Back on April 4th, 2017, we received an approximately two year old Pit bull, named Kane, as a surrendered animal from his previous owner. Upon arrival, Kane was in a poor emaciated condition and had sores on his body. He weighed just 45 lbs when he came to the shelter.

Due to his condition, we contacted Lincoln Animal Control and informed them of the situation. Animal Control conducted an investigation and determined Kane's condition warranted his previous owner be cited for animal neglect.

After he arrived, our veterinary staff assessed his condition and provided our animal care staff with a feeding schedule to prevent refeeding syndrome. Kane's blood work showed his muscles were beginning to waste in order to survive. This proved it was even more vital we provide Kane with an appropriate diet in quantity and nutrition.

Over the next two weeks, after he arrived, Kane began to gain weight and his sores started to heal. When he was weighed on April 17th, he had already gained over ten pounds! The veterinary staff determined he was ready to be moved into one of our awesome foster homes so he could continue his rehab. While he was in foster care, Kane had canine pals to hang out with as he put on the pounds!

Kane came back from foster care on May 12th for a check up and weighed 73 lbs! In just five weeks he had gained nearly 30 lbs with proper care and nutrition. We are happy to share that Kane found his new, loving home on May 20th!



We supply the food.

You provide the love.

*Become an animal foster parent
with Capital Humane Society!*

To find out how: Call 402.477.3270 or
email foster@capitalhumanesociety.org

Fall is Flea Season!

By Vickie Sundquist, Licensed Veterinary Technician

Board Officers

Jason Otto,
Chair

Frank Savage,
Vice Chair

Mary Abel,
Secretary

Gerry Finnegan,
Treasurer

Wendy Birdsall,
Board Member-at-Large
to Exec. Comm.

Directors

Barbara Ball
Clark Bellin
Dustin Bauer
Lori Hampton
Kayla Muhleisen
Sue Quambusch
April Rimpley
Ann Ringlein
Matt Roberts
LeRoy Sievers

Administrative Staff

Robert Downey
President & CEO

Lindsay Wallasky
Director of Operations
Pieloch Pet Adoption Center
& Co-Director of Fundraising

Matt Madcharo
Director of Operations
Admissions &
Assessment Center
& Co-Director of Fundraising

Charleen Engberg
Director of Education
& Volunteers

Dr. Kelly Anderson
Director of Veterinary Medicine

- Your pet can get fleas anytime of year, but in the fall, fleas are most abundant.
- Fleas are easy to prevent but can be very hard to get rid of.
- One adult female flea can lay up to 50 eggs per day. They can easily spread all over your home.
- Many flea products are available. Your veterinarian sells the safest and most effective.
- Never put flea products intended for dogs on cats! It can be fatal, always follow the label instructions.
- Signs your pet may have fleas:
 - Itching, biting at the fur.
 - Redness, hair loss, scabs (your pet may be allergic to the fleas).
 - "Flea dirt" is black, coffee ground looking specs on the skin.
 - Sometimes pale gums (fleas feed on your pet's blood).
- Fleas carry tapeworm larvae, so your pet could also be infected with tapeworms.
- All dogs and cats are provided with flea preventative/treatment at Capital Humane Society prior to adoption..



Purchase a raffle ticket and be entered for a chance to win this 1969 Corvette!

Raffle tickets are \$100. A maximum of 1,070 tickets will be sold. Tickets can be purchased at either Capital Humane Society location, or DuTeau Chevrolet, 7300 S 27th Street. Must be 18 years of age or older.

The winner is responsible for all costs and taxes when taking possession of the vehicle. The value of the vehicle is \$70,000.

This vehicle is graciously donated by Mark Pieloch.

Learning the Basics

By Shelby Backhus, Animal Behaviorist

A well-trained dog is easier to live with than one who does not know any commands. The basic commands most people think of are sit, down, leave it, and come. There are a couple key factors to keep in mind when training your dog.

The first key is to show your dog what you want and assign a command to that action. Try to say the command only once so that your dog learns he needs to listen on the first command. The second key factor is to always train with a leash and collar on your dog and make sure you have a hold of the leash. This lets you, the handler, be in control of the situation. The final key is rewarding your dog with a tasty treat when he has done well.

Below are some tips and tricks to teach your dog the basics:

- **SIT:**

- Hold on to your dog's leash near where it attaches to his collar. This is to stabilize your dog from scooting all over the place. Your other hand will place a treat in front of your dog's nose and move your hand with the treat to tilt his head backwards. This should result in your dog's bottom sitting on the floor. As your dog's bottom touches the floor say 'sit' and give the treat. With this, you are trying to help your dog make the connection between the action of sitting and the command sit. (Remember to never push on your dog's hips.)



- **LAY DOWN:**

- The first step in working on a lay down command is to place your dog to sit. Then with one hand on your dog's collar, take a treat with the other hand and place it in front of your dog's nose. Go directly straight down towards the floor with the treat. As your dog's elbows touch the ground say 'down' and give him the treat. This will help your dog make the connection between the action of lying down and the command down. (Remember to never push on your dog's neck.)

- **LEAVE IT:**

- Make sure to have your dog on a leash and hold the leash close to where it attaches to the collar. Grab some tasty treats and have them handy. Show your dog a treat, then without giving it to him drop it on the floor in front of him. As the treat is hitting the floor say 'leave it' and give a firm pop on your dog's collar with the leash. When your dog turns his head away from the treat praise your dog, pick the treat up off the floor, and give it to him. Your dog should not eat the treat off the floor. Teaching the command this way will help if you are ever in a situation where you drop something that your dog should not eat.

- **COME:**

- Have your dog on a leash and treats in your pocket. Act like you and your dog are going out for a walk. Once the dog is distracted and not paying attention to you, give a pop on the collar, say your dog's name and 'come' while quickly taking multiple steps backwards. Your dog should turn around and follow you. Lure your dog in close to you with the treat and then give it to him.

ARE YOU READY FOR SOME BASEBALL?!



**CHEER ON THE
LINCOLN SALTDOGS
& help support
Capital Humane
Society!**

**Purchase a voucher for \$12.00 to be redeemed for
any Lincoln Saltdogs home game.**

***Capital Humane Society will receive
a portion of all ticket sales purchased at the
Capital Humane Society!***



Save the Date !

**Tails 'N Ties
Annual Dinner**

Friday, October 20, 2017

Doors open at 5:45pm

**The Lincoln Marriot
Cornhusker Hotel
333 S 13th St**

**Capital Humane
Society
Out & About**

Critter Corner

Time Warner Cable, Ch 13
Wednesday, 6:30 p.m.
Thursday, 5:30 p.m.
Saturday, 4:00 p.m.
Sunday, 7:30 p.m.

**Lincoln
Journal Star**

Pet of the Week - Friday

**Neighborhood
Extra**

1st Saturday of the month

KOLN-TV 10/11

Monday, 5:50 a.m.
Thursday, 12:20 p.m.

KLKN-TV 8

Every Wednesday,
11:50 a.m.

KZUM 89.3 AM

Saturday, 10:15 a.m.

KLIN 1400 AM

Thursday, 6:55 a.m.

KFOR 1240 AM

Monday, 6:15 a.m.
Thursday, 8:45 a.m.

KFRX 106.3

Monday at 6:25 a.m.
and Thursday 9:00 a.m.

FROGGY981.com

Click on Pics/Videos to
find Frogs for Dogs



CapitalHumaneSociety



capitalhumanesociety



@capitalhumane

Web Site

capitalhumanesociety.org

Volunteer Spotlight - Jacki Rudebusch

By Charleen Engberg, Director of Education & Volunteers

We are always delighted to see Jacki Rudebusch come in to volunteer. Her composed and helpful attitude instantly brightens everyone's day.

"When I moved to Lincoln, I was looking to donate some of my free time to an animal-focused organization," she said. "Capital Humane Society had an opening for a dog walker and it has been a great fit."



"I walk, play with, and give love and attention to dogs in the adoption program," she explained.

Thanks to dedicated volunteers like Jacki, the dogs available for adoption have a good quality of life, which includes several scheduled outings each day.

Even on hot summer days or snowy winter days, Jacki arrives with a smile. In addition to providing physical exercise, she works on basic commands. The dogs enjoy working their minds too and are very happy for the time with volunteers getting praise.

"I enjoy having the opportunity to spend time with all of the different dogs that are waiting for their forever home," she said. "It makes me so happy to see pictures and hear updates on dogs after they have been adopted."

In addition to animal care, we depend on volunteers to help make our fundraisers a success. Jacki kindly assists with events such as our phone-a-thon and pet walk, too.

The tails on the dogs wag wildly when they see wonderful volunteers like Jacki. Just like us, they are very grateful for her generous support.

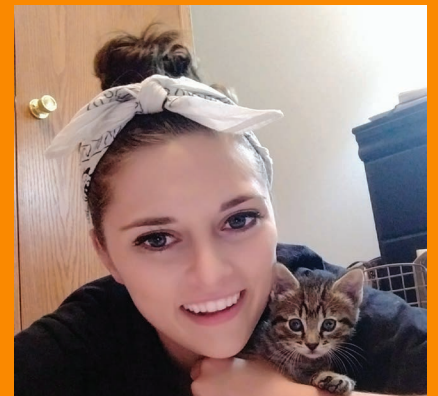
Staff Profile – Courtney Meier

By Lindsay Wallasky, Director of Operations & Co-Director of Fundraising

Courtney Meier joined the Capital Humane Society team in October of 2016 as one of our amazing Animal Care staff members.

Courtney grew up in Elm Creek, NE. She attended the University of Nebraska-Lincoln and graduated with a degree in Hospitality, Restaurant, and Tourism.

Courtney stays busy outside of work by caring for Lucy, her Pit Bull mix she adopted from CHS a few years ago. She enjoys bowling, going to movies, spending time in the backyard with her dog and camping.



Courtney's most memorable pet who was adopted from Capital Humane Society was Fred, a Pug, Boston Terrier mix. Fred was the very first adoption she did when she started at the shelter. She was so excited about the experience that she will never forget it.

While Courtney's dog, Lucy, keeps her plenty busy at home, she is also one of our many foster parents who welcomes and tends to animals that need a little extra care before entering the adoption program. She has fostered several kittens and puppies that needed to be bottle fed, which is no small task.

We are so delighted to have Courtney on board at Capital Humane Society. Her attention to detail and animal skills make her a very valuable employee to our organization.